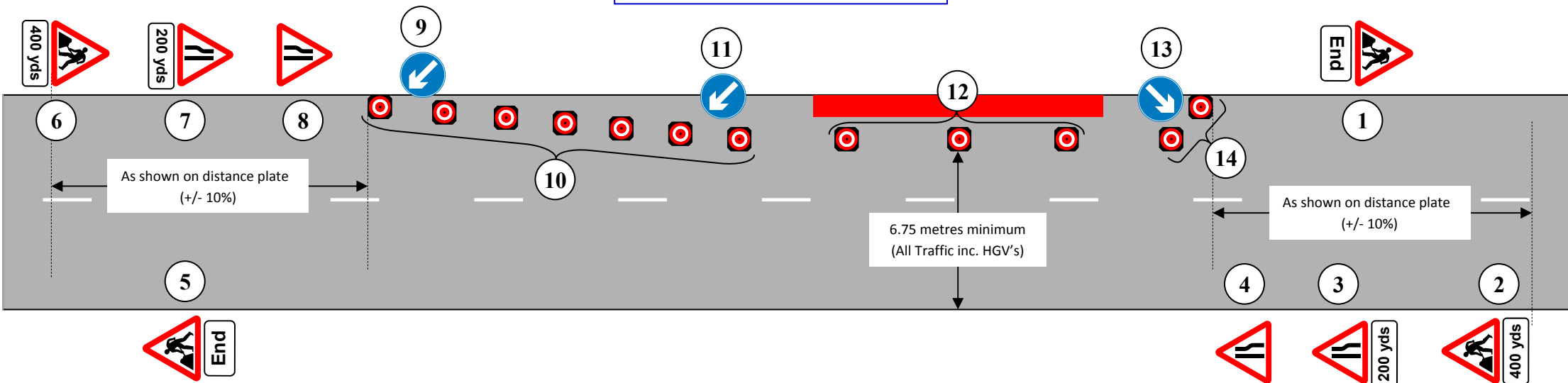


SINGLE CARRIAGEWAY (50 mph and above) ROAD NARROWING WITH TWO-WAY TRAFFIC



NOT TO SCALE

INSTALLATION



Installation

For all traffic including buses and HGV's, this arrangement must only be used where the remaining carriageway width is at least 6.75 metres. For roads where traffic is made up of cars and light vehicles only, the carriageway width may be reduced to 5.5 metres but a Supervisor must first be consulted.

'Single file traffic' supplementary plates must not be used.

Items should be brought into operation in the order shown above (i.e. 1 to 14).

The Lead Taper Length should be based on the speed of the road and the width of the closed lane. Taper Length details can be found in the SSoW : Useful References 05.

Cones in the Taper should be spaced at 3 metre centres and those in the longitudinal run at 9 metre centres. (Where the permanent speed limit is 40mph or more and works are greater than 180 metres, longitudinal cone spacing may be increased to 18 metres.)

For night working, Warning Lights should be placed at a maximum of 9 metre centres in the taper and a maximum of 9 metres in the longitudinal run. (Warning Light spacing in the longitudinal run may be increased to 18 metres where the permanent speed limit is 50mph or over or where the length of the works exceeds 180 metres.)

The installation, maintenance and removal of individual items is covered in the Working Safely Section of the SSoW should this be required.

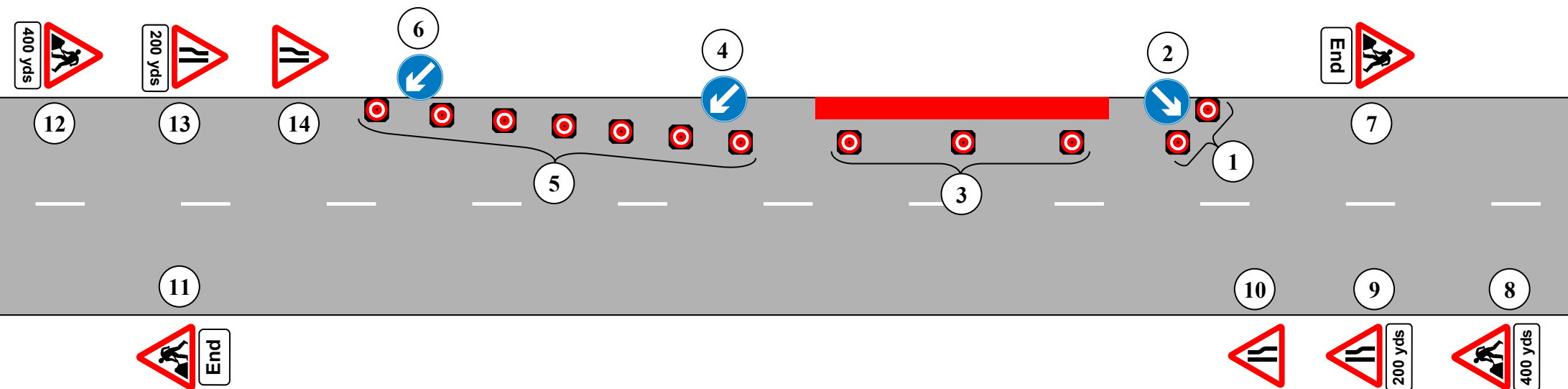
Notes

- Drawing should be rotated to match works location
- Safety Zone requirements are given in the SSoW
- Vehicle beacons should remain on during the installation process
- Always work facing oncoming traffic where reasonably practicable
- Always load and unload items from the safe side of the vehicle
- Cones used in the tapers must not obscure the 610 arrows
- Where possible, pre-placing items can minimise traffic disruption

SINGLE CARRIAGEWAY (50 mph and above) ROAD NARROWING WITH TWO-WAY TRAFFIC



REMOVAL



REMOVAL

Items should be taken out of service in the order shown (i.e. 1 to 14).

All obstructions must be removed from the carrieway before advance signing is removed.

Details covering the removal of individual items are given in the Working Safely Section of the SSoW should these be required.

Notes

- Drawings should be rotated to suit Works location
- Confirm with all contractors that work is complete before starting
- Check that all equipment has been removed from the closure
- Ensure that the road surface within the closure is clear of debris
- Vehicle beacons should remain on during the removal process
- Always work facing oncoming traffic where reasonably practicable
- Always load and unload items from the safe side of the vehicle
- Drivers should ensure that loads are secure prior to leaving site